

INTERALS AND WELDING

SHELL	INTERNAL SHELL FINISH	2B FINISH
LONGITUDINAL WELDS	WELD BEAD FUSED WITH BOTTOM	400mm
CIRCULAR WELDS	GROUND FLUSH	($R_o=1.3\mu\text{m MAX.}$)
DISHED ENDS	POLISHED TO 180 GRIT	($R_o=1.3\mu\text{m MAX.}$)
INTERNAL SURFACE	GROUND FLUSH	
WELD SEAMS		
CLEANING		
ON COMPLETION OF FABRICATION, THE VESSELS INTERNAL SURFACE IS TO BE DECREASED, PICKLED, PASSIVATED AND NEUTRALISED. A WHITE CLOTH TEST IS TO BE PERFORMED ON THE INTERNAL SURFACE TO CHECK FOR CLEANLINESS. THE OPENING POINTS ARE TO BE SEALED SO THAT THE VESSEL IS SUPPLIED CLEAN AND READY FOR USE. A CLEANING CERTIFICATE IS TO BE PROVIDED IN THE DOCUMENT HOLDER.		

PORT VALVE 2 1/2" BSP MK111 SUPER MAXI HIGH-FLOW RELIEF VALVE(S)

QUANTITY OF VALVES: 1 1+PROVISION 1

MODEL: PRESS/ACC WITH GAUZE G10/16312

FIRE SHIELD: YES

BURST DISC: PROVISION

MANOMETER: PROVISION

REDUCTION FACTORS IF APPLICABLE

FIRE SHIELD 1% : RF=0.99

BURST DISC 10% : RF=0.90

CFR49 83% : RF=0.83

FULL FLOW RATE OF VALVE = 16 036m³ /HR

ACTUAL FLOW RATE = QUANTITY*FULL FLOW*REDUCTION FACTORS

= 13 177m³ /HR

SAFETY VALVE ASSEMBLY

4xM16 ON 160 PCD
6xM12 ON 168 PCD
GASKET: KLINGERSIL/PITE

TOP DISCHARGE ASSEMBLY (17)

1 1/2" GESTRA BALL VALVE WITH PRESSURE CAP
GASKET: PITE

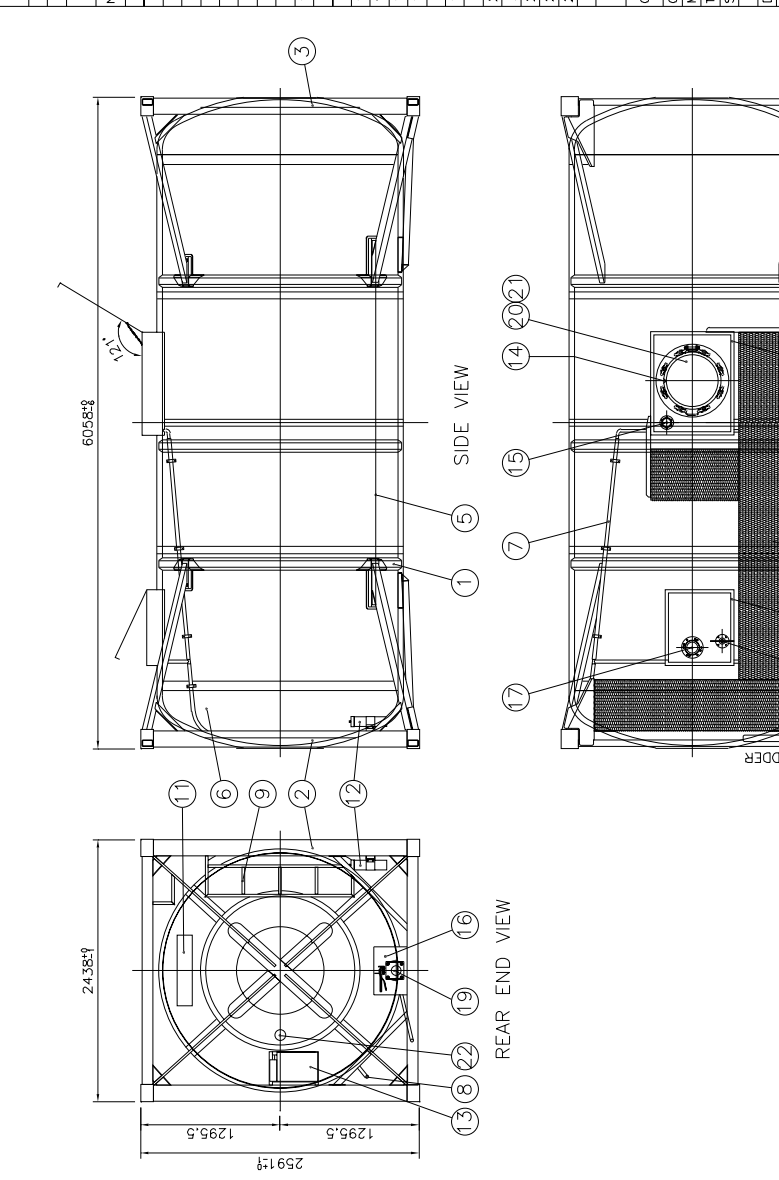
1 1/2" BSP CAP

IDENTIFIED BY SERIAL No. (23)

TACK WELD
HINGE PIN

MANWAY SEALING

AIR INLET ASSEMBLY (18)



BUTTERFLY VALVE FV 368/7000B
FOOT VALVE FV 830/3200

1-OFF WIRE SEAL PER SET OF NUTS

GASKET: SWEET WHITE RUBBER
SWIFT MANLID 8-POINT ASSY No. 51M7001 Rev.B PRT No. -01

BOTTOM DISCHARGE ASSEMBLY (19)

MANWAY ASSEMBLY (20)

MANWAY ASSEMBLY (20)

MATERIAL SPECIFICATION		DIMENSIONS		REFERENCE		
C ASTM A240 316	O P.V.C.			SPTU-2161		
Y S/S 316	J SWEET WHITE RUBBER			SPTU-2079		
PARTS LIST						
No.	QTY	MAT	STOCK CODE	DESCRIPTION	DIMENSIONS	REFERENCE
1	1			TANK DETAILS		SPTU-2161
2	1			REAR FRAME ASSEMBLY		SPTU-2079
3	1			FRONT FRAME ASSEMBLY		SPTU-2079
4	1			WALKWAYS		SPTU-2167
5	1			REMOTE CONTROL		SPTU-2031
6	1			INSULATION DETAILS		2305-00-2170
7	1			DRAIN TUBE DETAILS		SPTU-2202
8	1			STEAM HEATING		SPTU-2165
9	1			LADDER DETAIL		SPTU-2037
10	1			WELD PAD AND SPRING ORIENTATION		2305-00-2186
11	1			MARKINGS		2305-00-2171
12	1			DOCUMENT HOLDER FINING & REAR FRAME ATTACHMENTS		SPTU-2036
13	1			DATA PLATE		2305-00-1204
14	1			CALIBRATED DIPSTICK		CSTD-2157
15	1			8126 SAFETY RELIEF VALVE ASSEMBLY		CSTD-1060
16	1	Z		VALVE CABINET		2305-00-2259
17	1			TOP DISCHARGE ASSEMBLY		CSTD-1058
18	1			AIR INLET ASSEMBLY		2305-00-1817
19	1			BOTTOM DISCHARGE ASSEMBLY		2305-00-51
20	1	C		MANWAY - SWIFT		B POINT 500 I/D
21	1	J		MANWAY GASKET		
22	1	Y		11876 THERMOMETER		-20 to 200°C; 0 to 400°F
23	2	O		TIR SEAL		
24	8	Y		WIRE SEAL		Ø2x120 LG
MATERIAL SPECIFICATION						
CODES AND REGULATIONS					IND/ADP MAR 600, IND/COMB TYPE 1	
CONTENTS: PRODUCT OF CLASS					3, 6.1, 8 AND 9	
M.A.S.M.					36 000kg	
TARE MASS						
STACKING LOAD					86 400kg PER CORNER CASTING	
DESIGN PRESSURE					4 BAR	HEATING SYSTEM
HYDROSTATIC TEST PRESSURE					6 BAR	6 BAR
RID/ADR CALCULATION PRESSURE					6 BAR	SHIP 8 BAR
MAXIMUM ALLOWABLE VACUUM					0.41 BAR	
DESIGN TEMPERATURE					130°C (266°F); -30°C (-22°F)	
METALLURGICAL DESIGN TEMPERATURE					130°C (266°F); -30°C (-22°F)	
JOINT EFFICIENCY					SHELL 0.85	DISHED END 1.0
RADIOGRAPHY					SHELL SPOT	DISHED END 100%
CORROSION ALLOWANCE					0	
LEAKAGE TEST					YES	
DYE PENETRATION EXAMINATION					WHERE APPLICABLE	
INSULATION: SHELL					100mm DENSITY 21kg/m³	
INSULATION: HEADS					GLASSWOL DENSITY 16kg/m³ - THICKNESS TO SUIT	
GLASSING: SHELL (PRE-PAINTED WHITE)					0.8mm ALUMINIUM CLADDING (G:5251) (RAL 9010)	
GLASSING: HEADS (PIGMENTED WHITE)					3.0mm GLASS REINFORCED PLASTIC	
FINISH: SHOTBLAST					SA 2 1/2	
PAINT: FRAME					30µm DFT 1ST COAT HEMPADUR ZINC (1536)	
HEMPCEL					30µm DFT 2ND COAT HEMPADUR PRIMER (1530)	
MINIMUM DRY FILM THICKNESS					70µm DFT TOP COAT: HEMPALEX HIBUILD 4641	
TOP COAT COLOUR:					(HEMPCEL 1999) MATT BLACK	
ANTI STRESS CORROSION LACQUER					OVER COMPLETE BARREL (15 to 25µm D.F.T.)	
INSPECTION AUTHORITY					LLOYDS REGISTER	
P NUMBERS					P27112 TO P27121	
CONSANI ENGINEERING (PTY) LTD					ELISES RIVER, CAPE SOUTH AFRICA	TEL. 590-5400 FAX. 591-2825
INTERMODAL CONTAINERS					THE SHAWNEE AND ASSOCIATED (PTY) LTD AND/OR AFFILIATE COMPANIES MANUFACTURED UNDER A LICENSE FROM YORKSHIRE LIMITED, CAD: 230521720	
10 x 21 000 LITRE BEAM TANK CONTAINER						
GENERAL ARRANGEMENT						
MODEL SPI						
OCI	SCALE	1:25	DRAWING NUMBER			
CLIENT	DRAWN	SHAIFQUE	CHECKED			
WORKS	DATE	2305-00-2172	ORDER			

NOMINAL DIMENSIONS (SHORE SIZE OF TRIMMING)

LENGTH (mm)	WIDTH (mm)	HEIGHT (mm)	DEPTH (mm)	WEIGHT (kg)	AREA (m²)	VOLUME (m³)
1000	2000	4000	8000	8000	8000	8000
1200	2400	4800	9600	9600	9600	9600
1400	2800	5600	11200	11200	11200	11200
1600	3200	6400	12800	12800	12800	12800
1800	3600	7200	14400	14400	14400	14400
2000	4000	8000	16000	16000	16000	16000
2200	4400	8800	17600	17600	17600	17600
2400	4800	9600	19200	19200	19200	19200
2600	5200	10400	20800	20800	20800	20800
2800	5600	11200	22400	22400	22400	22400
3000	6000	12000	24000	24000	24000	24000
3200	6400	12800	25600	25600	25600	25600
3400	6800	13600	27200	27200	27200	27200
3600	7200	14400	28800	28800	28800	28800
3800	7600	15200	30400	30400	30400	30400
4000	8000	16000	32000	32000	32000	32000
4200	8400	16800	33600	33600	33600	33600
4400	8800	17600	35200	35200	35200	35200
4600	9200	18400	36800	36800	36800	36800
4800	9600	19200	38400	38400	38400	38400
5000	10000	20000	40000	40000	40000	40000

FROM 0-30 TOLERANCE ±1 DIN 8570 PART 1