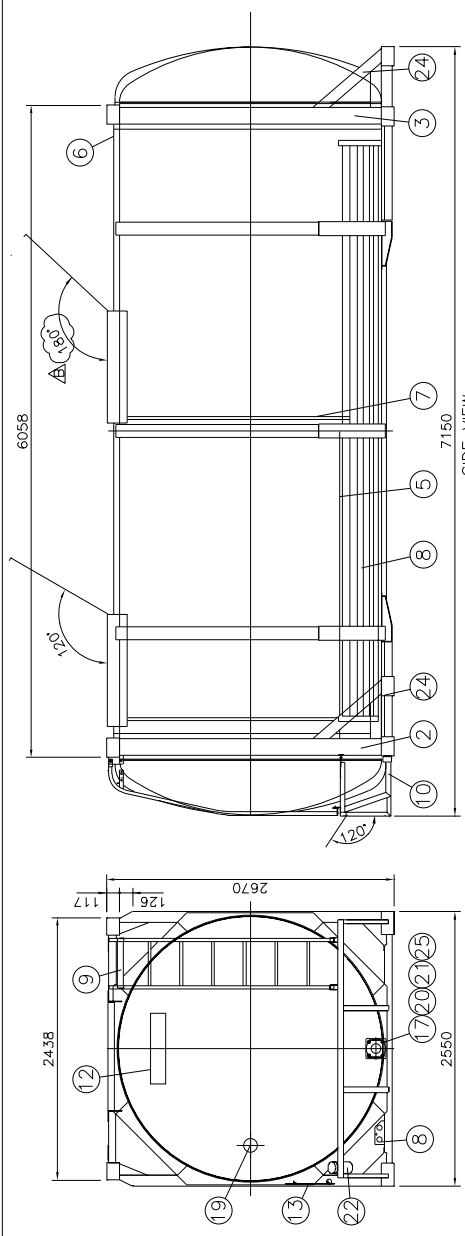


INTERALS AND WELDING

SHELL
INTERNAL SHELL FINISH 2B FINISH
LONGITUDINAL WELDS AS WELDED
CIRCULAR WELDS BEAD PENETRANT FUSED WITH BOTTOM 600mm GROUND FLUSH & POLISHED TO 180 GRIT (Ro=1.3µm MAX.)
DISHED ENDS POLISHED TO 180 GRIT (Ro=1.3µm MAX.)
WELD SEAMS GROUND FLUSH

CLEANING
ON COMPLETION OF FABRICATION, THE VESSELS INTERNAL SURFACE IS TO BE DEGRADED, PICKLED, PASSIVATED AND NEUTRALISED. A WHITE CLOTH TEST IS TO BE PERFORMED ON THE INTERNAL SURFACE TO CHECK FOR CLEANLINESS. THE OPENING POINTS ARE TO BE SEALED SO THAT THE VESSEL IS SUPPLIED CLEAN AND READY FOR USE. A CLEANING CERTIFICATE IS TO BE PROVIDED IN THE DOCUMENT HOLDER.



MATERIAL SPECIFICATION

C ASTM A240 316 O P.V.C. Y 15/S 316 J BRAIDED PTFE

PARTS LIST

No.	QTY	MAT	STOCK CODE	DESCRIPTION	DIMENSIONS	REFERENCE
1	1			TANK DETAILS		8116-02-03
2	1			REAR FRAME ASSEMBLY		8116-02-05
3	1			FRONT FRAME DETAIL		8116-02-07
4	3			WALKWAYS		8116-02-14
5	1			REMOTE CONTROL ASSEMBLY		8116-02-17
6	1			INSULATION DETAILS		8116-02-19
7	4			DRAIN TUBE DETAILS		8116-02-15
8	1			STEAM HEATING		8116-02-08
9	1			LADDER DETAIL		8116-02-11
10	1			REAR FRAME BUMPER		8116-02-10
11	1			DIPSTICK		CSTD 2157
12	1			MARKINGS		8116-02-20
13	1			DATA PLATE		8116-02-21
14	2			2½" SAFETY RELIEF VALVE ASSEMBLY		8116-02-22
15	1			1½" AIR INLET ASSEMBLY		8116-02-23
16	1			3" TOP DISCHARGE PROVISION		8116-02-24
17	1			3" BOTTOM DISCHARGE ASSEMBLY		8116-02-25
18	1	C/J		MANWAY & GASKET	Ø 300	8116-02-25
19	1	Y		THERMOMETER	Ø 20 to 180°C, 0 to 300°F	8116-02-19
20	6	Y		TIR SEAL		B.O.P.
21	10	Y		WIRE SEAL	Ø 2x120 LG	B.O.P.
22	1			DOCUMENT HOLDER		CSTD 400C
23	1			HAND RAIL		B.O.P.
24	4			STEPBACK DETAILS		SHEET 1 8116-02-06
25	1	C/J		BOTTOM DISCHARGE VALVE CABINET		8116-02-28
26	1	C/J		CLEANING HATCH & GASKET	Ø 300	8116-02-28

TECHNICAL SPECIFICATION

CODES AND REGULATIONS
INDG-IND TYPE 4, RID/ADR LEBN
CSG, HFCUSTOMS, UIC 992-4, UK-DETR
EN 13443, EN 12285, EN 12285-2, EN 12285-3, EN 12285-4, EN 12285-5, EN 12285-6, EN 12285-7, EN 12285-8, EN 12285-9, EN 12285-10, EN 12285-11, EN 12285-12, EN 12285-13, EN 12285-14, EN 12285-15, EN 12285-16, EN 12285-17, EN 12285-18, EN 12285-19, EN 12285-20, EN 12285-21, EN 12285-22, EN 12285-23, EN 12285-24, EN 12285-25, EN 12285-26, EN 12285-27, EN 12285-28, EN 12285-29, EN 12285-30, EN 12285-31, EN 12285-32, EN 12285-33, EN 12285-34, EN 12285-35, EN 12285-36, EN 12285-37, EN 12285-38, EN 12285-39, EN 12285-40, EN 12285-41, EN 12285-42, EN 12285-43, EN 12285-44, EN 12285-45, EN 12285-46, EN 12285-47, EN 12285-48, EN 12285-49, EN 12285-50, EN 12285-51, EN 12285-52, EN 12285-53, EN 12285-54, EN 12285-55, EN 12285-56, EN 12285-57, EN 12285-58, EN 12285-59, EN 12285-60, EN 12285-61, EN 12285-62, EN 12285-63, EN 12285-64, EN 12285-65, EN 12285-66, EN 12285-67, EN 12285-68, EN 12285-69, EN 12285-70, EN 12285-71, EN 12285-72, EN 12285-73, EN 12285-74, EN 12285-75, EN 12285-76, EN 12285-77, EN 12285-78, EN 12285-79, EN 12285-80, EN 12285-81, EN 12285-82, EN 12285-83, EN 12285-84, EN 12285-85, EN 12285-86, EN 12285-87, EN 12285-88, EN 12285-89, EN 12285-90, EN 12285-91, EN 12285-92, EN 12285-93, EN 12285-94, EN 12285-95, EN 12285-96, EN 12285-97, EN 12285-98, EN 12285-99, EN 12285-100

CONTENTS: PRODUCT OF CLASS 3, 6, 1, 8 & 9
M.P.G.M. 34 000kg

TARE MASS 18 000kg PER CORNER POST

STACKING LOAD VESSEL HEATING SYSTEM

MAXIMUM ALLOWABLE WORKING PRESSURE 6 BAR 6 BAR 10 BAR 10 BAR

HYDROSTATIC TEST PRESSURE 6 BAR 6 BAR 10 BAR 10 BAR

CALCULATION PRESSURE 0.4 BAR

MAXIMUM EXTERNAL PRESSURE 0.4 BAR

TANK METAL DESIGN TEMPERATURE 130°C (266°F); -40°C (-40°F)

JOINT EFFICIENCY SHELL 0.85 DISHED END 1.0

RADIOGRAPHY SHELL SPOT 0.1mm

CORROSION ALLOWANCE HEADS 0.1mm

LEAKAGE TEST YES

DYE PENETRATION EXAMINATION NOZZLE TO SHELL JUNCTION WELDS

INSULATION: SHELL ROCKWOOL 50mm

INSULATION: HEADS GLASSWOOL - THICKNESS TO SUIT

CLADDING SHELL - ALUMINIUM GR. 5251 0.8mm WILL FINISH

CLADDING HEADS - G.R.P. 2mm END CAPS COLOURED WHITE - RAL 9010

FINISH: SHOTBLAST SA 2½

PAINT: FRAME 30µm DFT LIST COAT HEMPADOUR ZINC 1536
30µm DFT 2ND COAT HEMPADOUR PRIMER 1530

HEMPEL 70µm DFT TOP COAT: HEMPADEX HIBUILD 4641

MINIMUM DRY FILM THICKNESS 130µm DFT

TOP COAT COLOUR: JET BLACK RAL 9005

LADDER HOT DIP GALVANISED

ANTI STRESS CORROSION LACQUER OVER COMPLETE BARREL (15 to 25µm D.F.T.)

INSPECTION AUTHORITY P32786 TO P32785

P NUMBERS

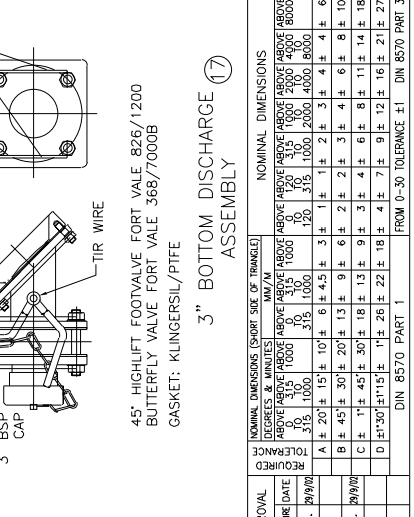
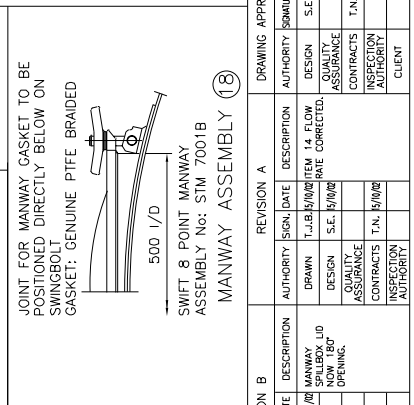
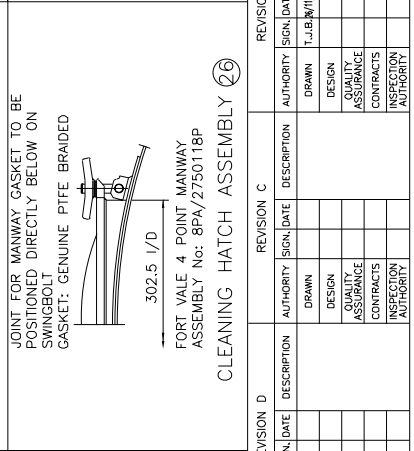
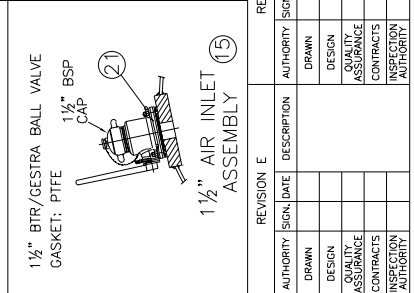
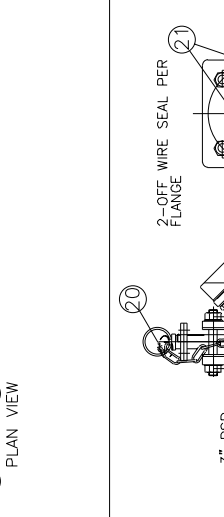
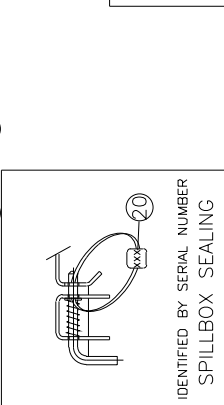
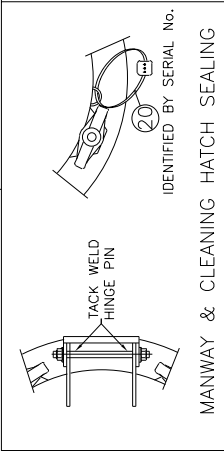
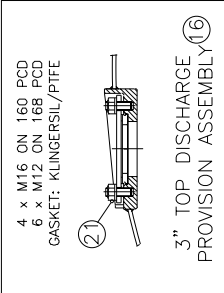
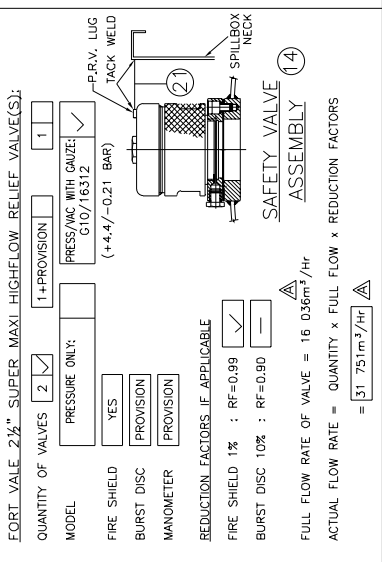
CONSANI ENGINEERING (PTY) LTD
ELSES RIVER CAPE
SOUTH AFRICA
TEL: 591-3400
FAX: 591-2825

INTERMODAL CONTAINERS

GENERAL ARRANGEMENT
20 x 31 000 LITRE ST22 SWAP TANK

SCALE 1:25
CLIENT T.J.B.
CHECKED T.J.B.
DATE 29/9/02

ORDER 8116
DRAWING NUMBER 8116-02-00
REVISION B



REVISION A

REVISION	DATE	DESCRIPTION	AUTHORITY	SIGNATURE
REVISION A				

REVISION B

REVISION	DATE	DESCRIPTION	AUTHORITY	SIGNATURE
REVISION B				

REVISION C

REVISION	DATE	DESCRIPTION	AUTHORITY	SIGNATURE
REVISION C				

REVISION D

REVISION	DATE	DESCRIPTION	AUTHORITY	SIGNATURE
REVISION D				

REVISION E

REVISION	DATE	DESCRIPTION	AUTHORITY	SIGNATURE
REVISION E				

NOMINAL DIMENSIONS (SHORT SIDE OF TRIANGLE)

LENGTHS & MINUTES	MM	IN
0-100	0-1000	0-40
100-200	1000-2000	40-80
200-300	2000-3000	80-120
300-400	3000-4000	120-160
400-500	4000-5000	160-200
500-600	5000-6000	200-240
600-800	6000-8000	240-320
800-1000	8000-10000	320-400
1000-1500	10000-15000	400-600
1500-2000	15000-20000	600-800
2000-3000	20000-30000	800-1200
3000-4000	30000-40000	1200-1600
4000-6000	40000-60000	1600-2400
6000-8000	60000-80000	2400-3200
8000-10000	80000-100000	3200-4000
10000-15000	100000-150000	4000-6000
15000-20000	150000-200000	6000-8000
20000-30000	200000-300000	8000-12000
30000-40000	300000-400000	12000-16000
40000-60000	400000-600000	16000-24000
60000-80000	600000-800000	24000-32000
80000-100000	800000-1000000	32000-40000
100000-150000	1000000-1500000	40000-60000
150000-200000	1500000-2000000	60000-80000
200000-300000	2000000-3000000	80000-120000
300000-400000	3000000-4000000	120000-160000
400000-600000	4000000-6000000	160000-240000
600000-800000	6000000-8000000	240000-320000
800000-1000000	8000000-10000000	320000-400000
1000000-1500000	10000000-15000000	400000-600000
1500000-2000000	15000000-20000000	600000-800000
2000000-3000000	20000000-30000000	800000-1200000
3000000-4000000	30000000-40000000	1200000-1600000
4000000-6000000	40000000-60000000	1600000-2400000
6000000-8000000	60000000-80000000	2400000-3200000
8000000-10000000	80000000-100000000	3200000-4000000
10000000-15000000	100000000-150000000	4000000-6000000
15000000-20000000	150000000-200000000	6000000-8000000
20000000-30000000	200000000-300000000	8000000-12000000
30000000-40000000	300000000-400000000	12000000-16000000
40000000-60000000	400000000-600000000	16000000-24000000
60000000-80000000	600000000-800000000	24000000-32000000
80000000-100000000	800000000-1000000000	32000000-40000000
100000000-150000000	1000000000-1500000000	40000000-60000000
150000000-200000000	1500000000-2000000000	60000000-80000000
200000000-300000000	2000000000-3000000000	80000000-120000000
300000000-400000000	3000000000-4000000000	120000000-160000000
400000000-600000000	4000000000-6000000000	160000000-240000000
600000000-800000000	6000000000-8000000000	240000000-320000000
800000000-1000000000	8000000000-10000000000	320000000-400000000
1000000000-1500000000	10000000000-15000000000	400000000-600000000
1500000000-2000000000	15000000000-20000000000	600000000-800000000
2000000000-3000000000	20000000000-30000000000	800000000-1200000000
3000000000-4000000000	30000000000-40000000000	1200000000-1600000000
4000000000-6000000000	40000000000-60000000000	1600000000-2400000000
6000000000-8000000000	60000000000-80000000000	2400000000-3200000000
8000000000-10000000000	80000000000-100000000000	3200000000-4000000000
10000000000-15000000000	100000000000-150000000000	4000000000-6000000000
15000000000-20000000000	150000000000-200000000000	6000000000-8000000000
20000000000-30000000000	200000000000-300000000000	8000000000-12000000000
30000000000-40000000000	300000000000-400000000000	12000000000-16000000000
40000000000-60000000000	400000000000-600000000000	16000000000-24000000000
60000000000-80000000000	600000000000-800000000000	24000000000-32000000000
80000000000-100000000000	800000000000-1000000000000	32000000000-40000000000
100000000000-150000000000	1000000000000-1500000000000	40000000000-60000000000
150000000000-200000000000	1500000000000-2000000000000	60000000000-80000000000
200000000000-300000000000	2000000000000-3000000000000	80000000000-120000000000
300000000000-400000000000	3000000000000-4000000000000	120000000000-160000000000
400000000000-600000000000	4000000000000-6000000000000	160000000000-240000000000
600000000000-800000000000	6000000000000-8000000000000	240000000000-320000000000
800000000000-1000000000000	8000000000000-10000000000000	320000000000-400000000000
1000000000000-1500000000000	10000000000000-15000000000000	400000000000-600000000000
1500000000000-2000000000000	15000000000000-20000000000000	600000000000-800000000000
2000000000000-3000000000000	20000000000000-30000000000000	800000000000-1200000000000
3000000000000-4000000000000	30000000000000-40000000000000	1200000000000-1600000000000
4000000000000-6000000000000	40000000000000-60000000000000	1600000000000-2400000000000
6000000000000-8000000000000	60000000000000-80000000000000	2400000000000-3200000000000
8000000000000-10000000000000	80000000000000-100000000000000	3200000000000-4000000000000
10000000000000-15000000000000	100000000000000-150000000000000	4000000000000-6000000000000
15000000000000-20000000000000	150000000000000-200000000000000	6000000000000-8000000000000
20000000000000-30000000000000	200000000000000-300000000000000	8000000000000-12000000000000
30000000000000-40000000000000	300000000000000-400000000000000	12000000000000-16000000000000
40000000000000-60000000000000	400000000000000-600000000000000	16000000000000-24000000000000
60000000000000-80000000000000	600000000000000-800000000000000	24000000000000-32000000000000
80000000000000-100000000000000	800000000000000-1000000000000000	32000000000000-40000000000000
100000000000000-150000000000000	1000000000000000-15000000	