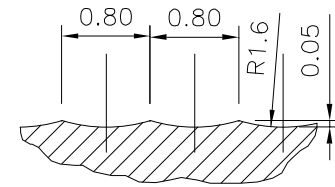


# MATERIAL SPECIFICATION

C ASTM A240 316 OR 316L



## SERRATION DETAIL E

STANDARD SERRATIONS TO BS1560 PART 2

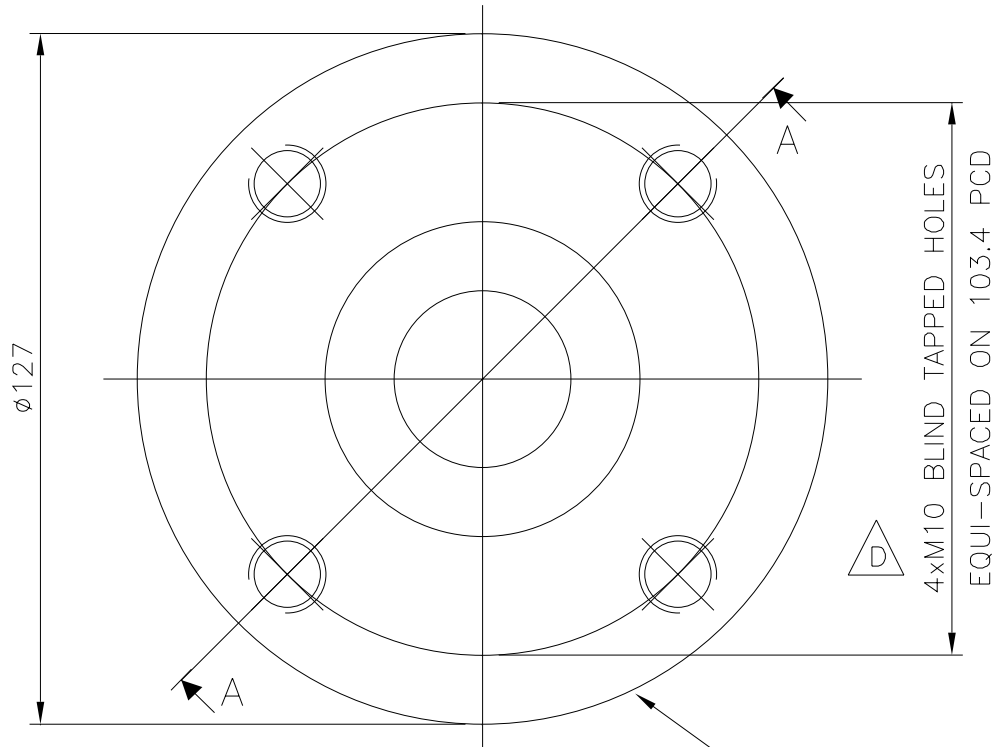


N8 ALL OVER  
U.O.S.

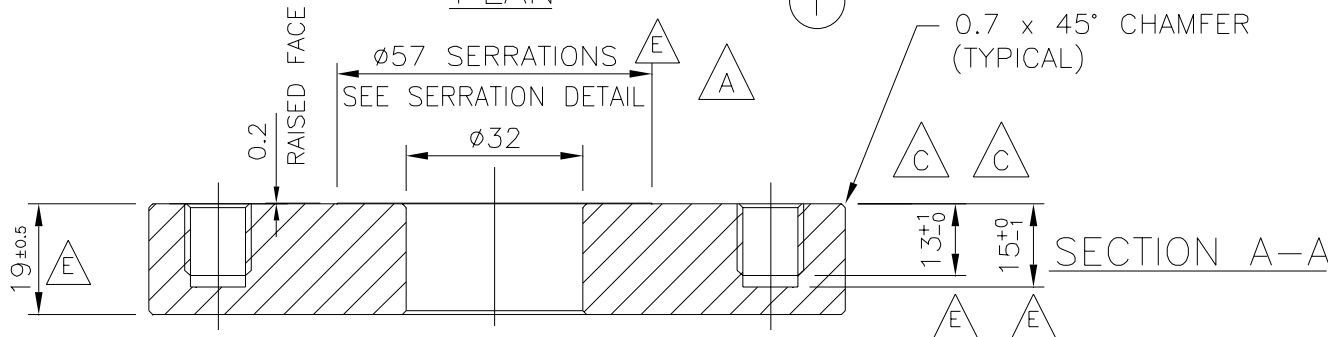
NOTE:

FLANGES TOLERANCED TO ANSI B16.5 U.O.S.  
REMOVE ALL SHARP EDGES AND BURRS  
PICKLE & PASSIVATE FLANGE

DO NOT SCALE DRAWING

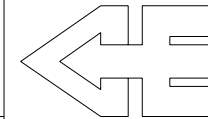


### PLAN



ITEM	QTY	MAT	BOP Pg/No	DESCRIPTION	REF
1	1	C	12125	FLANGE Ex PL20 x 32 I/D x 127 O/D	

### PARTS LIST



**CONSANI ENGINEERING (PTY) LTD**  
ELSIES RIVER, CAPE SOUTH AFRICA  
TEL. 590-3400  
FAX. 591-2825

INTERMODAL CONTAINERS

THIS DRAWING AND INFORMATION IS THE PROPERTY OF CONSANI'S ENG (PTY) LTD AND MAY NOT BE REVEALED TO ANY THIRD PARTY WITHOUT OUR WRITTEN PERMISSION.

CAD: CST0585e.DWG

WELD PAD FOR  
1 1/2" AIR INLET

REVISION E				REVISION D				DRAWING APPROVAL		
AUTHORITY	SIGN.	DATE	DESCRIPTION	AUTHORITY	SIGN.	DATE	DESCRIPTION	AUTHORITY	SIGNATURE	DATE
DRAWN	G.P.	27/2/01	SERRATION DETAIL ADDED. 1mm RAISED FACE NOW 0.2mm.	DRAWN	S.G.	15/12/99	4 x BLIND TAPPED HOLES WAS M8, NOW M10.	DESIGN	S.E.	23/03
DESIGN				DESIGN	E.M.	15/12/99		QUALITY ASSURANCE	P.B.	23/03
QUALITY ASSURANCE				QUALITY ASSURANCE				CONTRACTS	M.H.	23/03
CONTRACTS				CONTRACTS	A.C.	15/12/99		INSPECTION AUTHORITY		
INSPECTION AUTHORITY				INSPECTION AUTHORITY				CLIENT		

CLIENT	SCALE	1:1	DRAWING No.	REV
W.O.	DRAWN	K. JAFFER	CSTD 585	E
	CHECKED			
	DATE	23/03/94		