

MATERIAL SPECIFICATION

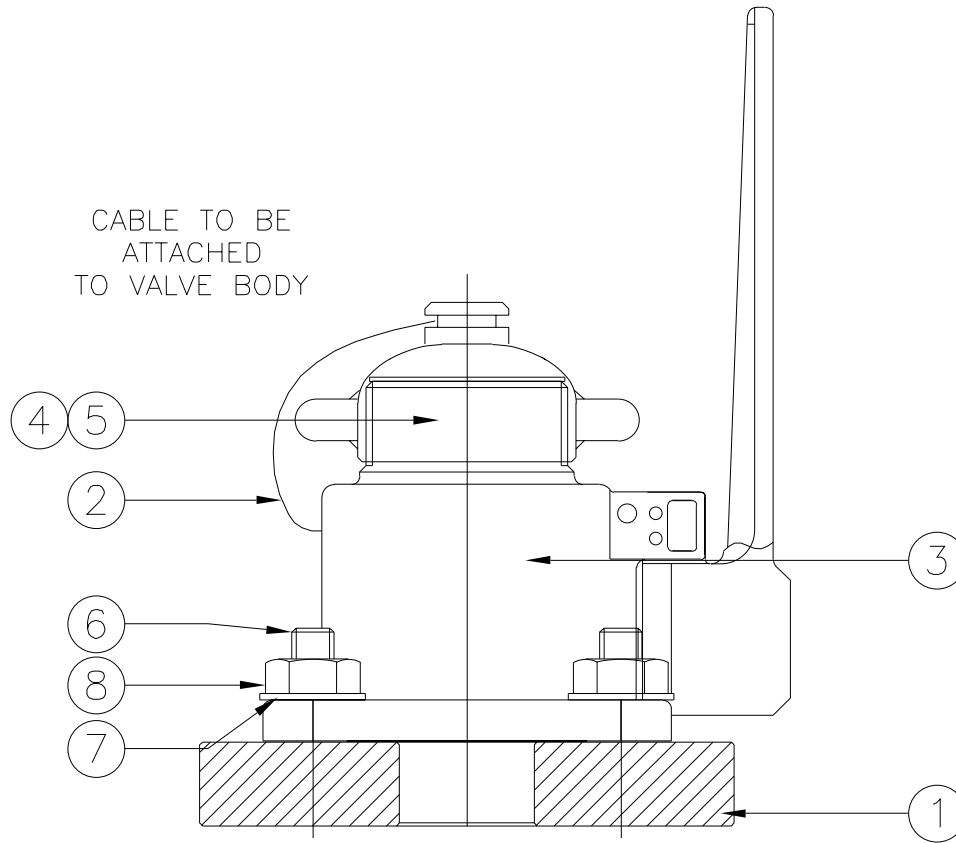
Y S/S 316

Z S/S 304

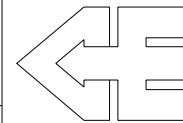
PARTS LIST

No.	QTY	MAT	STOCK CODE	DESCRIPTION	REFERENCE
1	1			AIR INLET WELD PAD	CSTD 585
2	1	Z	8128	∅2 CABLE	
3	1	Y		1½" BTR/GESTRA BALL VALVE	B.O.P.
4	1	Z		1½" PRESSURE CAP	B.O.P.
5	1			1½" PRESSURE CAP GASKET	B.O.P.
6	4	Z	11788	M10x40LG STUDBOLT	
7	4	Z	8133	M10 SPRING WASHER	
8	4	Z		M10 NUT	

CABLE TO BE ATTACHED TO VALVE BODY



- QUANTITIES GIVEN ARE FOR 1-OFF T.C.
50-OFF TANK CONTAINERS IN CONTRACT.



CONSANI ENGINEERING (PTY) LTD

ELSIES RIVER, CAPE
SOUTH AFRICA

TEL. 592-3400

FAX. 591-2825

INTERMODAL CONTAINERS

THIS DRAWING AND INFORMATION IS THE PROPERTY OF CONSANI ENG. (PTY) LTD AND MAY NOT BE REVEALED TO ANY THIRD PARTY WITHOUT OUR WRITTEN PERMISSION.

CAD: 24420590

REVISION B				REVISION A				DRAWING APPROVAL		
AUTHORITY	SIGN.	DATE	DESCRIPTION	AUTHORITY	SIGN.	DATE	DESCRIPTION	AUTHORITY	SIGNATURE	DATE
DRAWN				DRAWN				DESIGN		
DESIGN				DESIGN				QUALITY ASSURANCE		
QUALITY ASSURANCE				QUALITY ASSURANCE				CONTRACTS		
CONTRACTS				CONTRACTS				INSPECTION AUTHORITY		
INSPECTION AUTHORITY				INSPECTION AUTHORITY				CLIENT		

BTR/GESTRA 1½" BSP
BALL VALVE ASSEMBLY

CLIENT	OCI	SCALE	1:2	DRAWING NUMBER	REVISION
WORKS ORDER	2442	DRAWN	RASHAAD	2442-02-0590	0
		CHECKED			
		DATE	13/02/02		